



COMUNE DI MONTERIGGIONI

PIANO ATTUATIVO

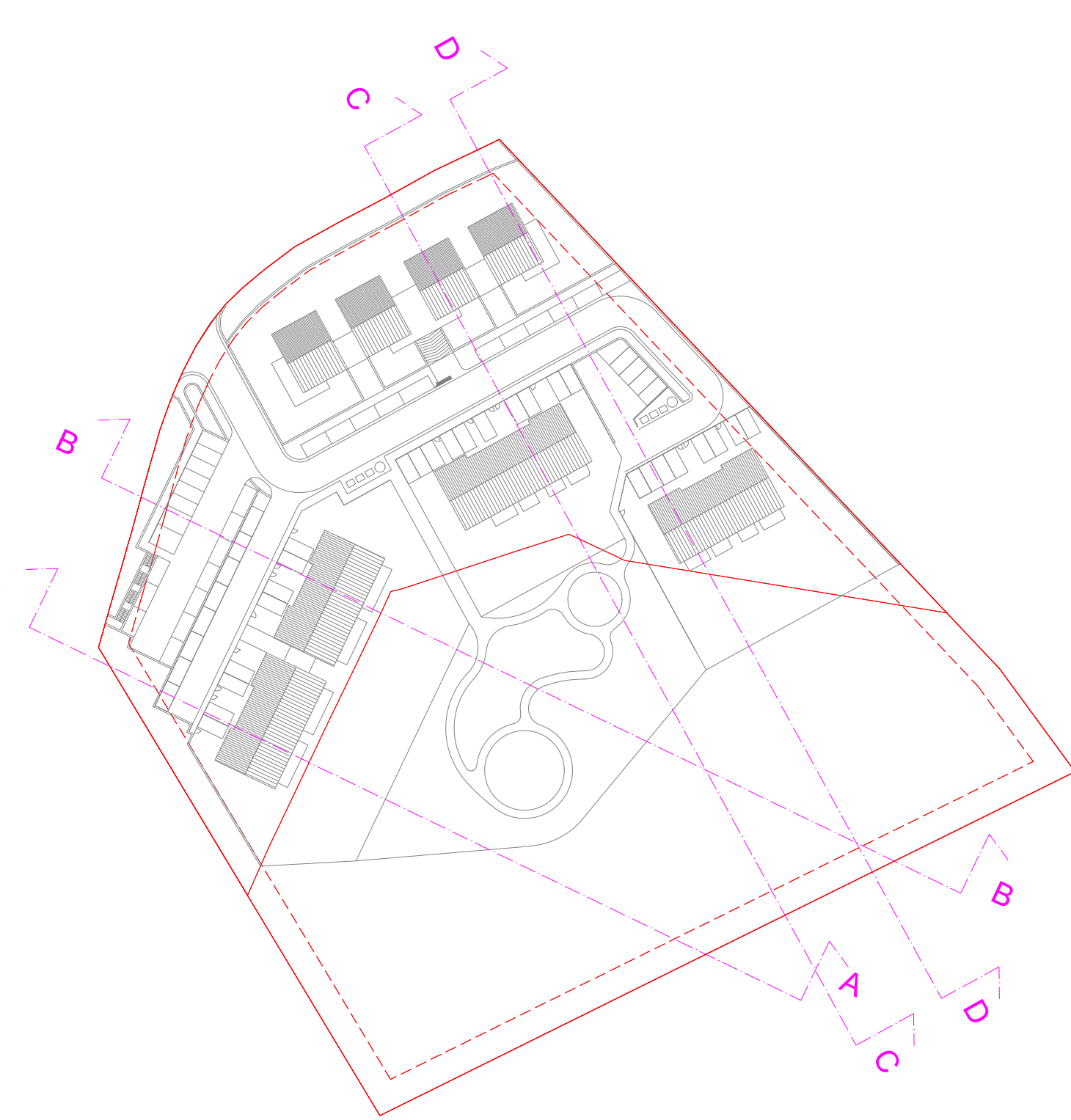
relativo alla progettazione dell'Area di Trasformazione Urbanistica TU 20
(art.31delle NTA di RU) in Loc.San Martino, Comune di Monteriggioni (SI)



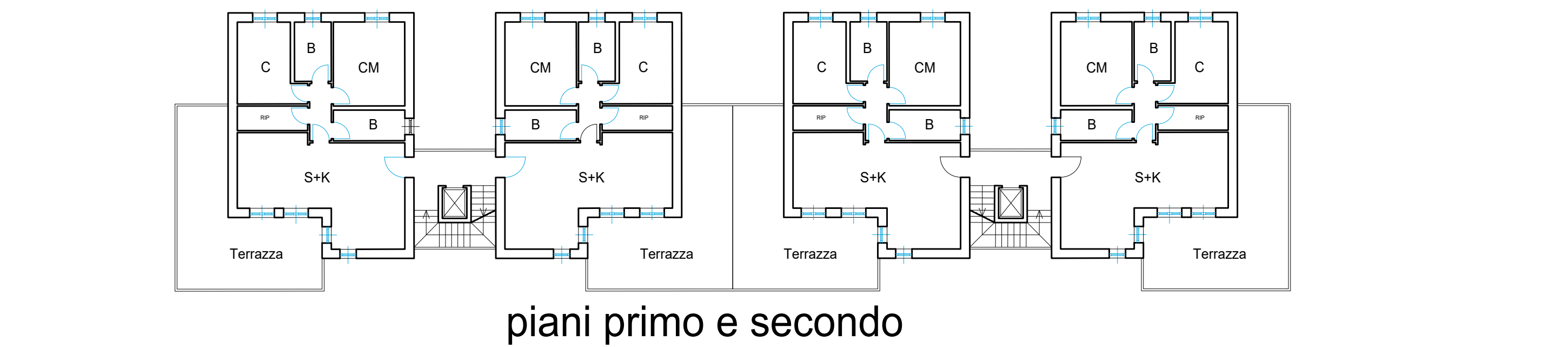
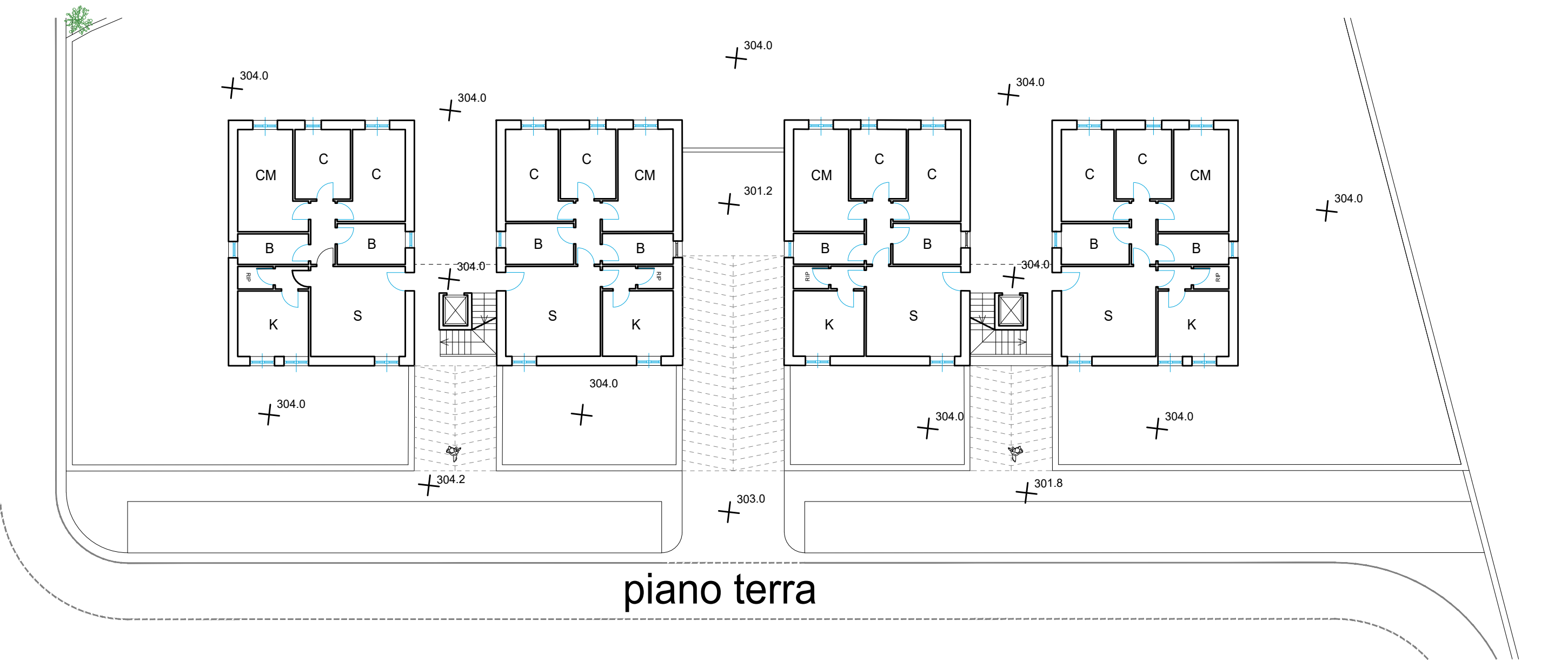
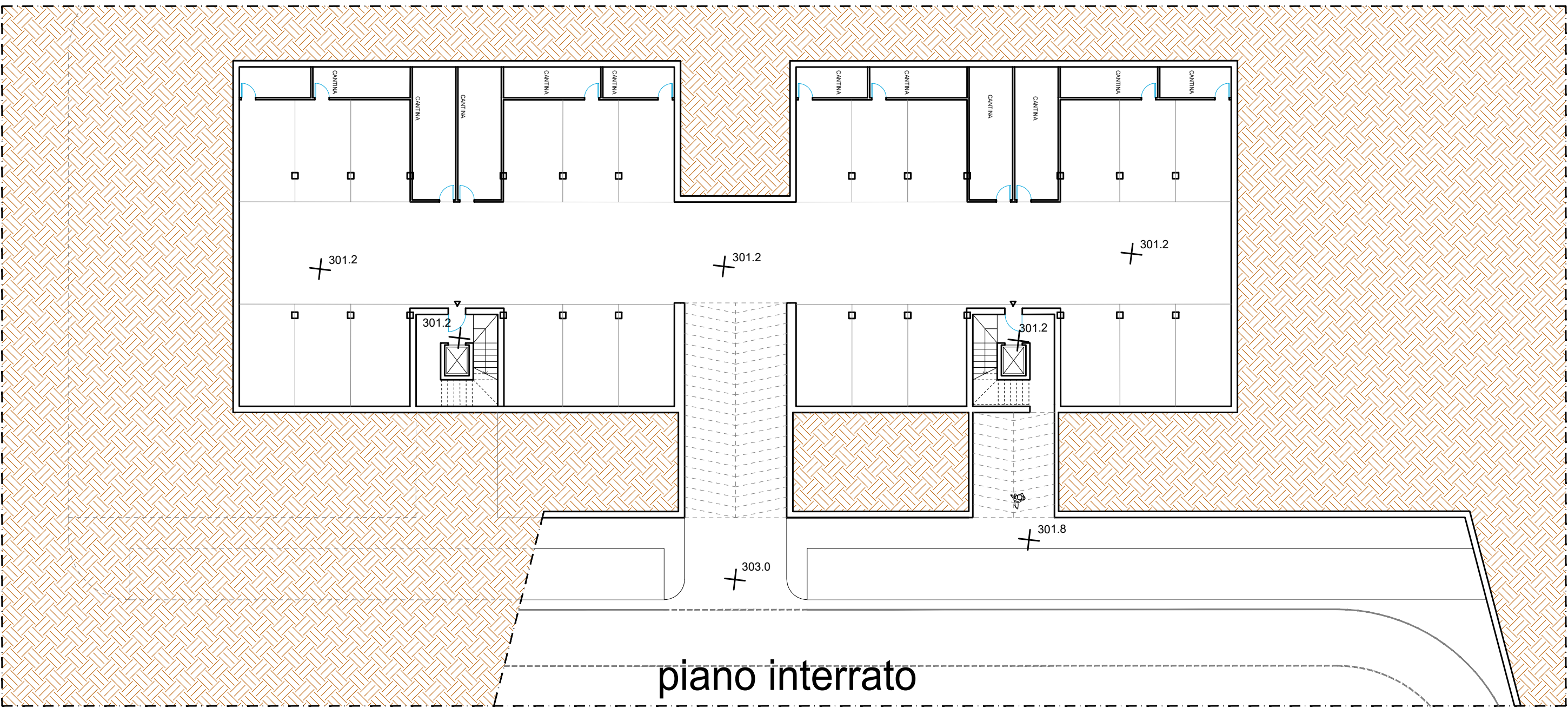
Proprietà:
MASSINI & GORI S.r.l.
Via Fratelli Alinari,1 - Montevarchi (AR) tel.055 910 2750 info@massiniegori.it

Progettisti:
ARCH. FIAMMA CATALDO & ARCH.ALBERTO PIERALLINI
Piazza Guido Chigi Saracini, 12 - Siena tel.0577 43165 f.cataldo@studio_12.it a.pierallini@studio_12.it

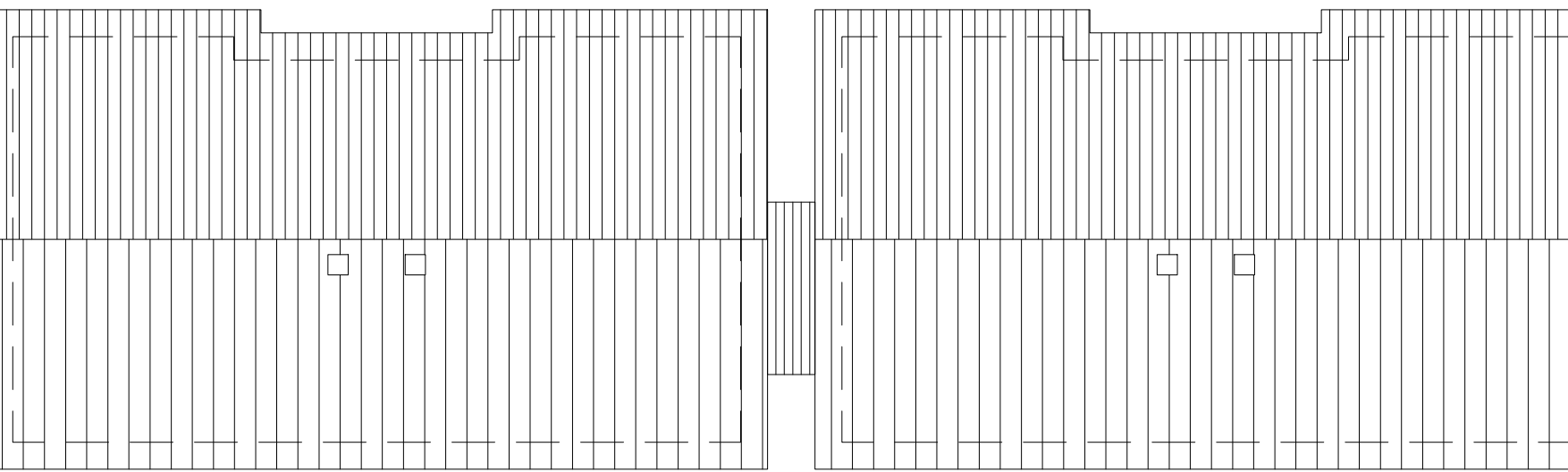
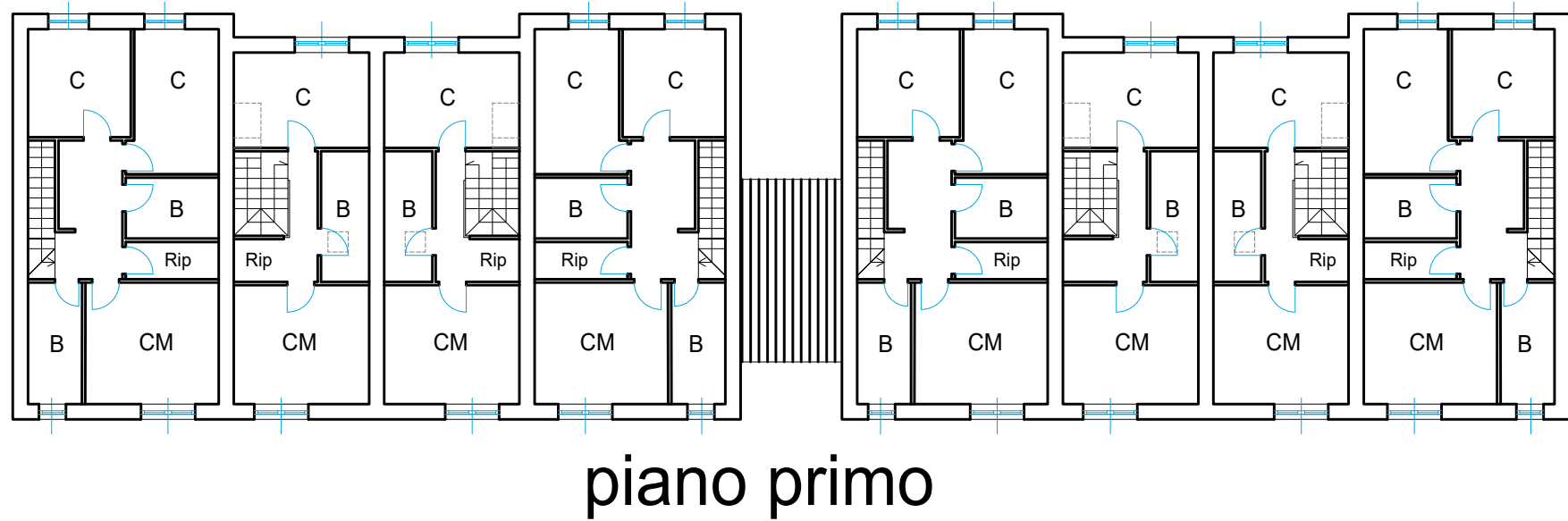
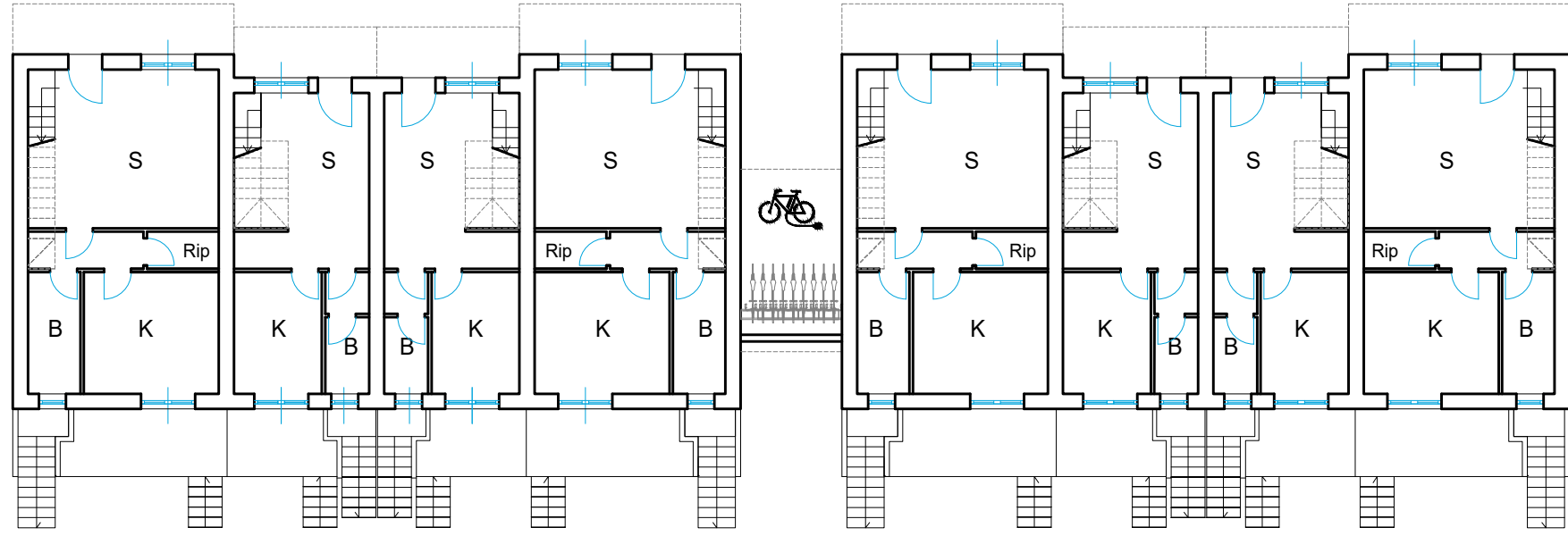
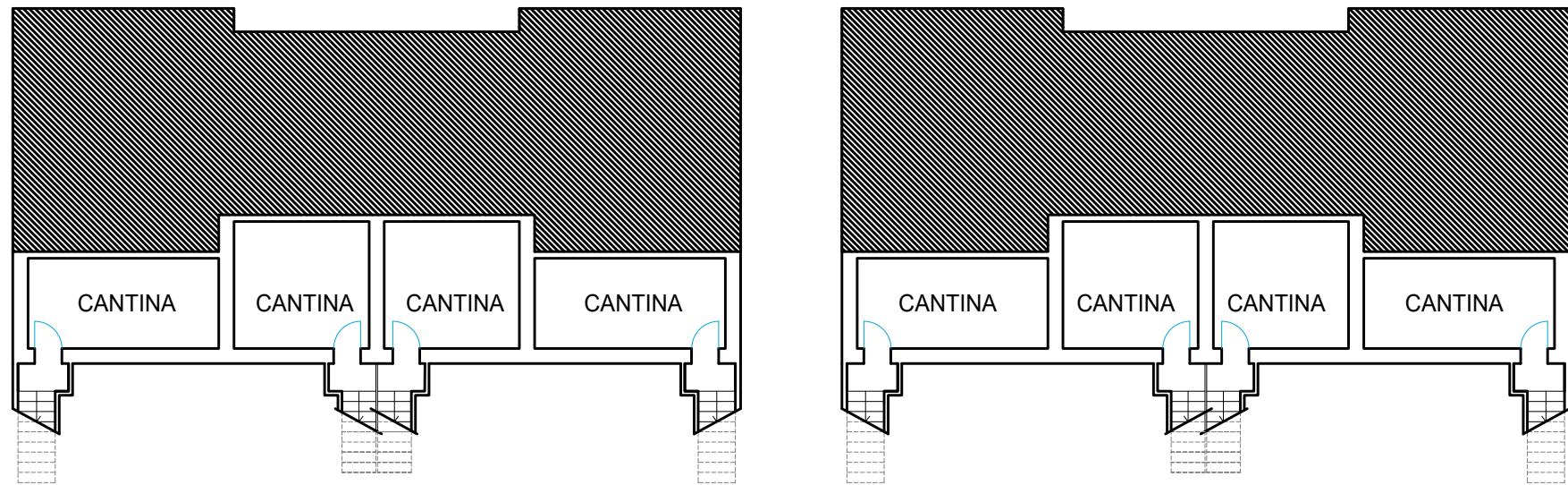
Contenuto: TIPOLOGIE EDILIZIE		Tavola: 06
Data: Luglio 2022	Scala: 1:200	



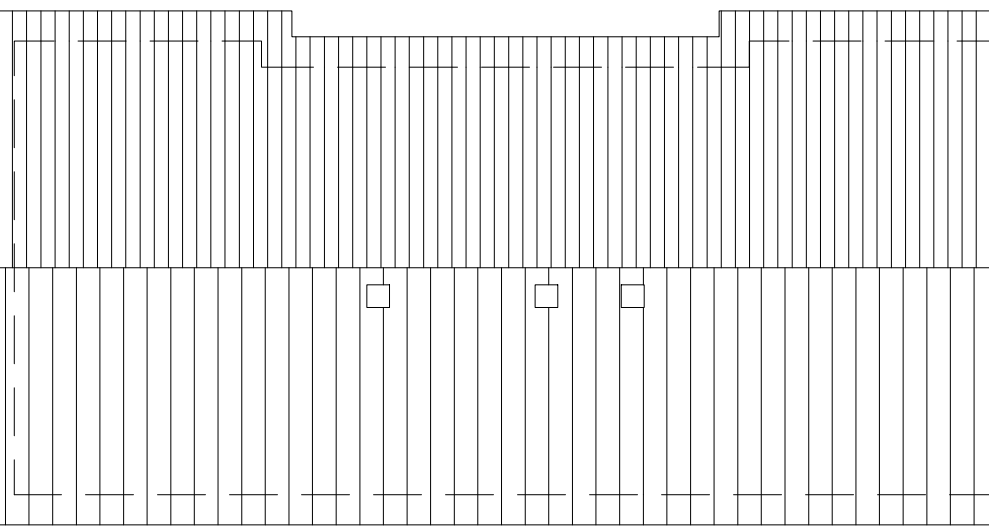
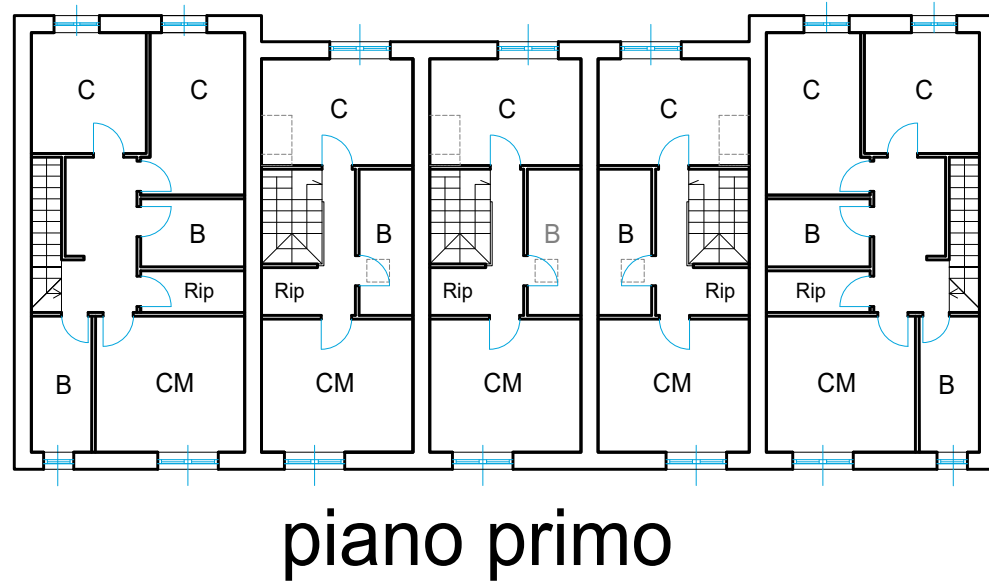
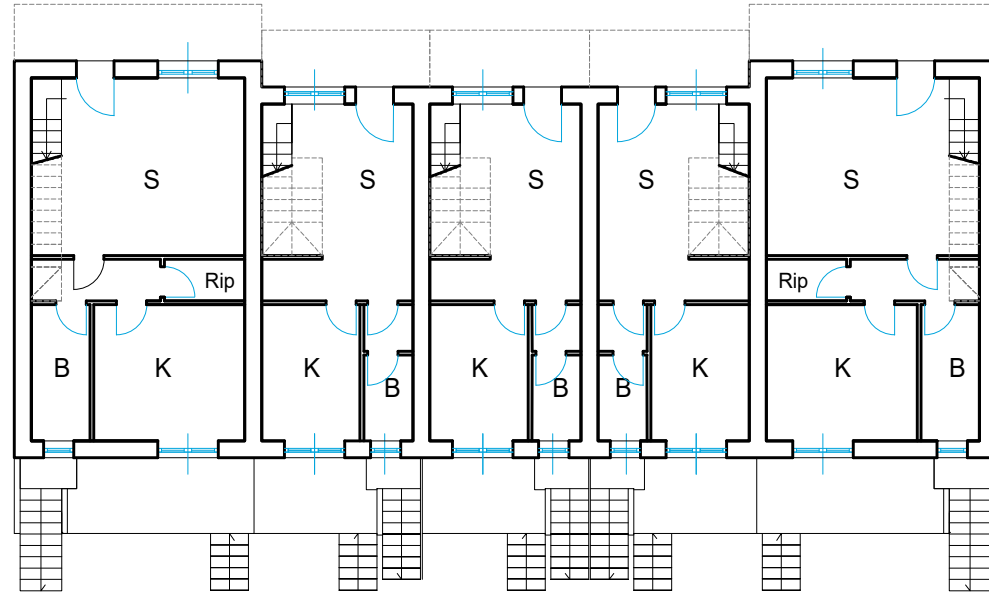
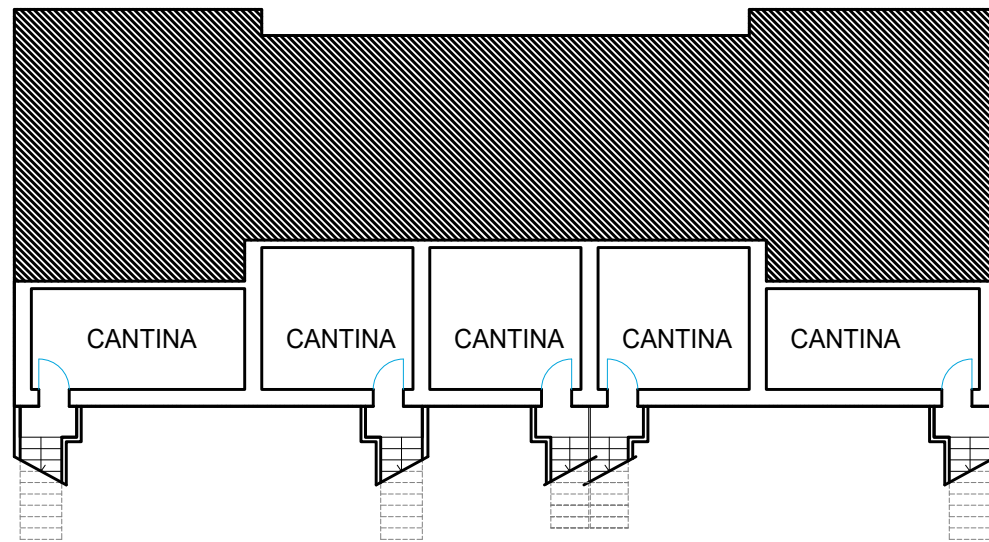
LOTTO 1
(edifici in linea 3 piani fuori terra)



LOTTO 2
(edifici a schiera 2 piani fuori terra)



LOTTO 3
(edificio a schiera 2 piani fuori terra)



LOTTO 4
(edificio a schiera 2 piani fuori terra)

